

## Feed Analysis Report

Representative:  
Josh Baker

Southeast Agriseeds 5162  
257 Pinson Rd NE  
Rome, GA 30161  
706.528.4806

1 AS9301 164.3

**Dry Matter 15.57%**  
**Moisture 84.43%**

Description (%DM unless specified)	Dry Matter Basis	Sorghum/Sudan (Silage)	
		60 dy Avg	4 yr Avg
Dry Matter	15.57	100	30.5
Crude Protein	12.27		13.0
Soluble Protein, %CP	50.69		56.2
Avail. Crude Protein	11.38		12.2
ADICP	0.89		0.786
NDICP	2.58		1.90
ADICP %CP	7.28		6.35
ADF	39.34		38.3
aNDF	58.81		56.7
aNDFom	56.39		52.9
RUP %CP	26.14		25.0
Calcium	0.27		0.400
Phosphorus	0.35		0.317
Magnesium	0.22		0.270
Potassium	2.73		2.60
Sulfur	0.15		0.172
Fat (EE)	2.64		2.71
Ash	8.54		11.4
Lignin	4.60		4.86
Sugar (ESC)	4.20		3.13
Sugar (WSC)	7.39		4.65
Starch	1.62		3.56
<b>Fermentation Products</b>			
Lactic Acid	4.15		4.32
Acetic Acid	2.21		1.63
Butyric Acid	0.30		0.556
Ammonia-N CP Equivalent	0.53		1.24
Ammonia-N, %CP	4.30		9.80
pH	4.46		4.33
Fermentation DM Loss**	15.48		6.75
<b>NDF Digest: Traditional=Goering &amp; Van Soest Method, Standardized=Combs-Goeser Method</b>			
NDFD 30, %NDF	51.13		51.6
NDFD 48, %NDF	69.22		66.9
Standardized NDFD 24, %NDF	26.07		24.5
Standardized NDFD 30, %NDF	34.96		32.3
Standardized NDFD 48, %NDF	56.17		54.0
NDFD 120, %NDF	75.69		70.1
NDFD 240, %NDF	77.68		74.9
uNDF30	28.74		27.5
uNDF240	13.12		14.4
tNDFD30om %aNDFom	54.63		54.4
tNDFD120om %aNDFom	78.19		72.7
tNDFD240om %aNDFom	80.10		77.4
uNDF120om	12.30		
uNDF240om	11.22		
uNDF30om	25.59		
<b>Calculations</b>			
TTNDFD, %NDF	48.30		46.6
TTNDFD Deviation, %NDF	1.75		
RFQ	114		
Dynamic NDF Kd (using 24,30,48,240 hr) %/hr	5.14		5.33

**Bold results by wet chemistry**

Lab # 3-263-633

Sampled 7/8/2019

Received 7/10/2019

# Feed Analysis Report

Representative:  
Josh Baker

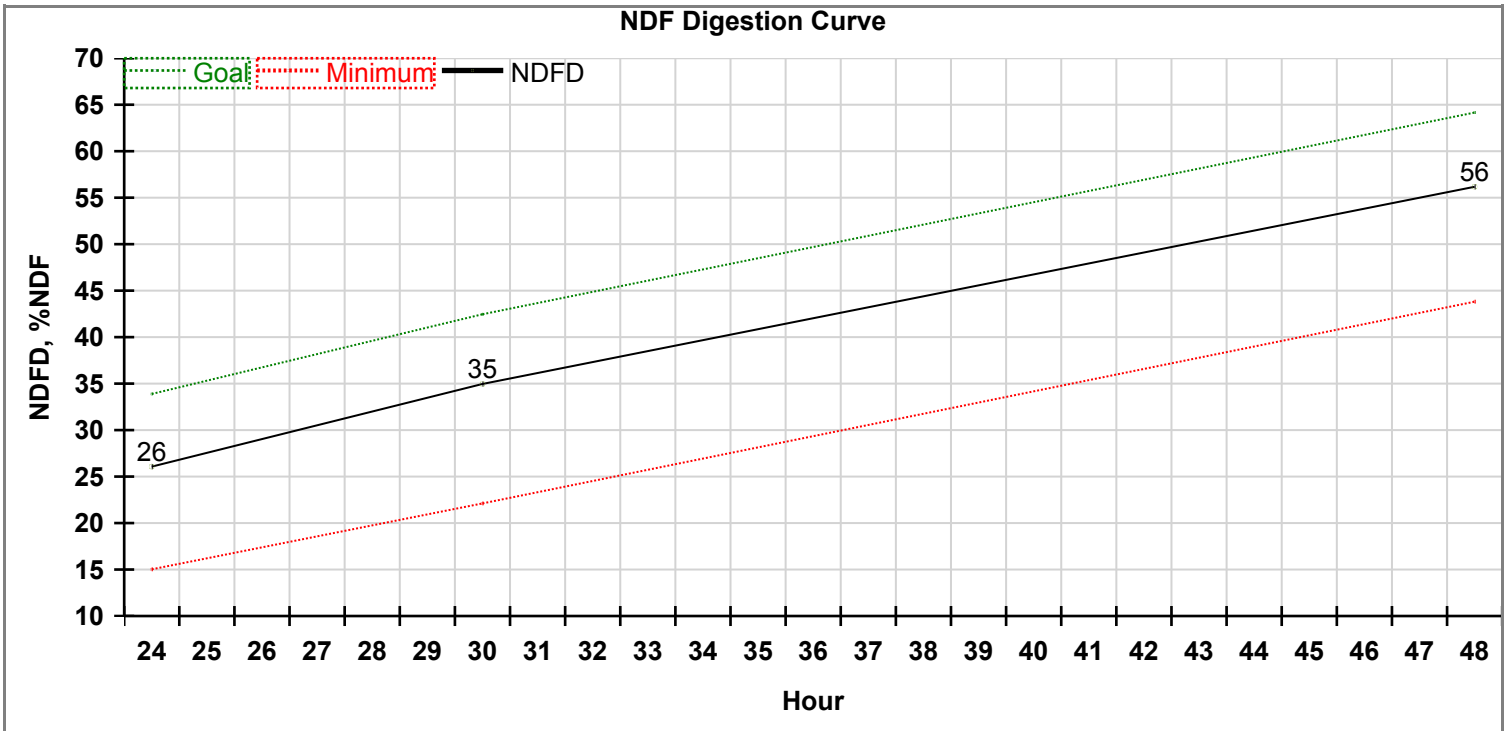
Southeast Agriseeds 5162  
257 Pinson Rd NE  
Rome, GA 30161  
706.528.4806

1 AS9301 164.3

**Dry Matter 15.57%**  
**Moisture 84.43%**

RFV	92	98.8
NFC	20.32	18.2
<b>Milk 2006 Energy calculated using 30h Trad NDFD Dairy</b>		
TDN 1X	57.92	51.2
NEL 3x, Mcal/lb	0.535	0.496
NEG, Mcal/lb	0.319	0.193
NEM, Mcal/lb	0.577	0.444
Milk/Ton, lb	2218	2020

For analysis guidelines, please visit <http://www.rockriverlab.com>

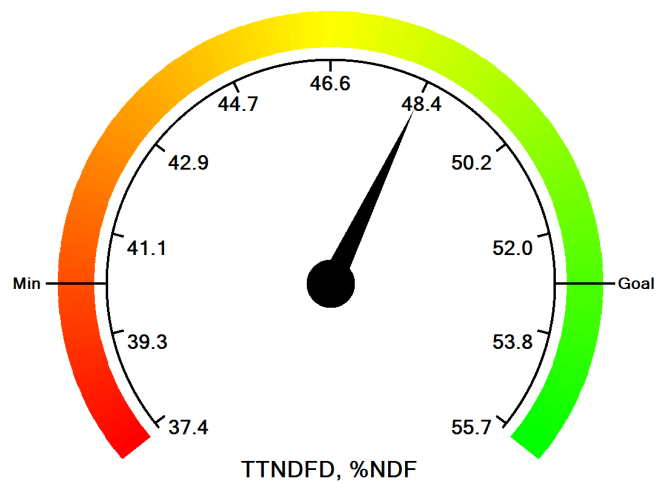
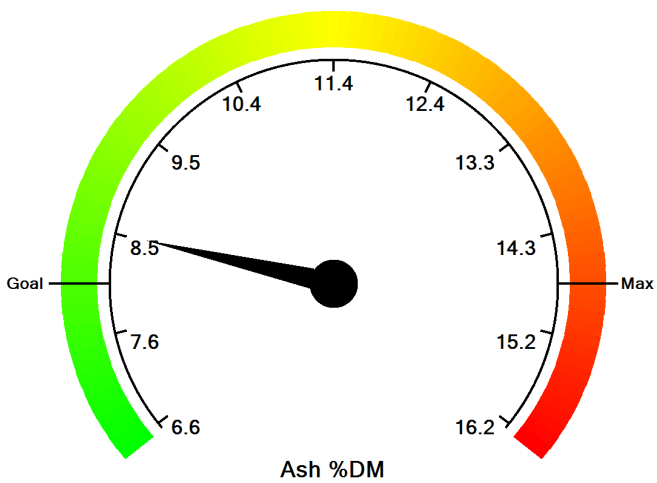
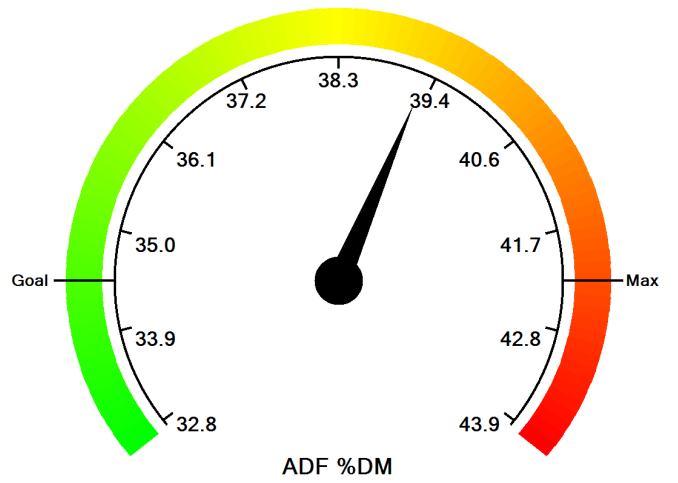
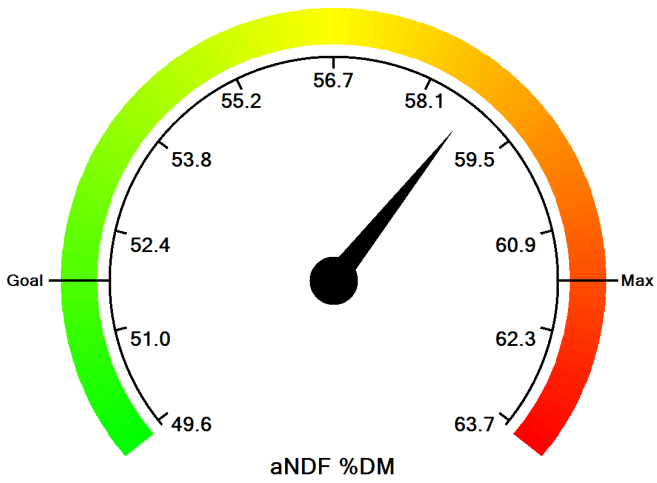
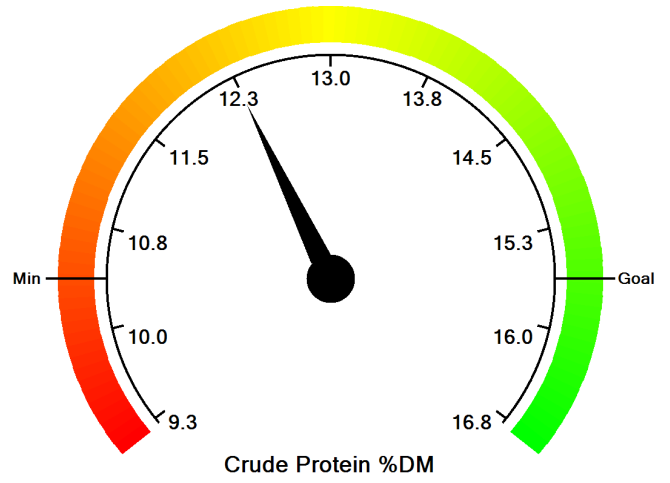
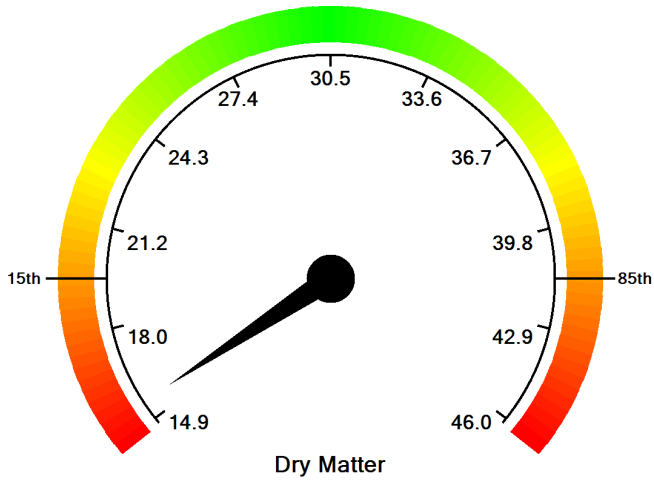


aNDF (w/NaSO<sub>3</sub>) %DM = 58.8

The Goal corresponds to the 85th percentile and the Minimum corresponds to the 15th percentile.

# Visual Feed Analysis Report

Lab Number 3263633 7/8/2019  
Sample ID AS9301 164.3  
Farm  
Consultant Josh Baker



The Goal corresponds to the 85th percentile and the Minimum corresponds to the 15th percentile.