

Feed Analysis Report

Representative:
Josh Baker

Southeast Agriseeds 5162
257 Pinson Rd NE
Rome, GA 30161
706.528.4806

2 Summer Feast 185.8

Dry Matter 16.30%
Moisture 83.70%

Description (%DM unless specified)	Dry Matter Basis	Sorghum/Sudan (Silage)	
		60 dy Avg	4 yr Avg
Dry Matter	16.30	100	30.5
Crude Protein	12.62		13.0
Soluble Protein, %CP	49.46		56.2
Avail. Crude Protein	11.97		12.2
ADICP	0.65		0.786
NDICP	2.11		1.90
ADICP %CP	5.17		6.35
ADF	36.47		38.3
aNDF	57.26		56.7
aNDFom	54.07		52.9
RUP %CP	23.74		25.0
Calcium	0.31		0.400
Phosphorus	0.37		0.317
Magnesium	0.29		0.270
Potassium	3.47		2.60
Sulfur	0.16		0.172
Fat (EE)	2.59		2.71
Ash	10.74		11.4
Lignin	4.24		4.86
Sugar (ESC)	3.97		3.13
Sugar (WSC)	6.07		4.65
Starch	3.91		3.56
Fermentation Products			
Lactic Acid	2.01		4.32
Acetic Acid	4.03		1.63
Butyric Acid	0.34		0.556
Ammonia-N CP Equivalent	0.87		1.24
Ammonia-N, %CP	6.89		9.80
pH	4.79		4.33
Fermentation DM Loss**	29.71		6.75
NDF Digest: Traditional=Goering & Van Soest Method, Standardized=Combs-Goeser Method			
NDFD 30, %NDF	54.91		51.6
NDFD 48, %NDF	72.46		66.9
Standardized NDFD 24, %NDF	32.35		24.5
Standardized NDFD 30, %NDF	41.91		32.3
Standardized NDFD 48, %NDF	62.44		54.0
NDFD 120, %NDF	75.30		70.1
NDFD 240, %NDF	77.50		74.9
uNDF30	25.82		27.5
uNDF240	12.88		14.4
tNDFD30om %aNDFom	58.06		54.4
tNDFD120om %aNDFom	77.93		72.7
tNDFD240om %aNDFom	80.07		77.4
uNDF120om	11.94		
uNDF240om	10.78		
uNDF30om	22.68		
Calculations			
TTNDFD, %NDF	53.23		46.6
TTNDFD Deviation, %NDF	6.67		
RFQ	122		
Dynamic NDF Kd (using 24,30,48,240 hr) %/hr	6.07		5.33

Bold results by wet chemistry

Lab # 3-263-637

Sampled 7/8/2019

Received 7/10/2019

Feed Analysis Report

Representative:
Josh Baker

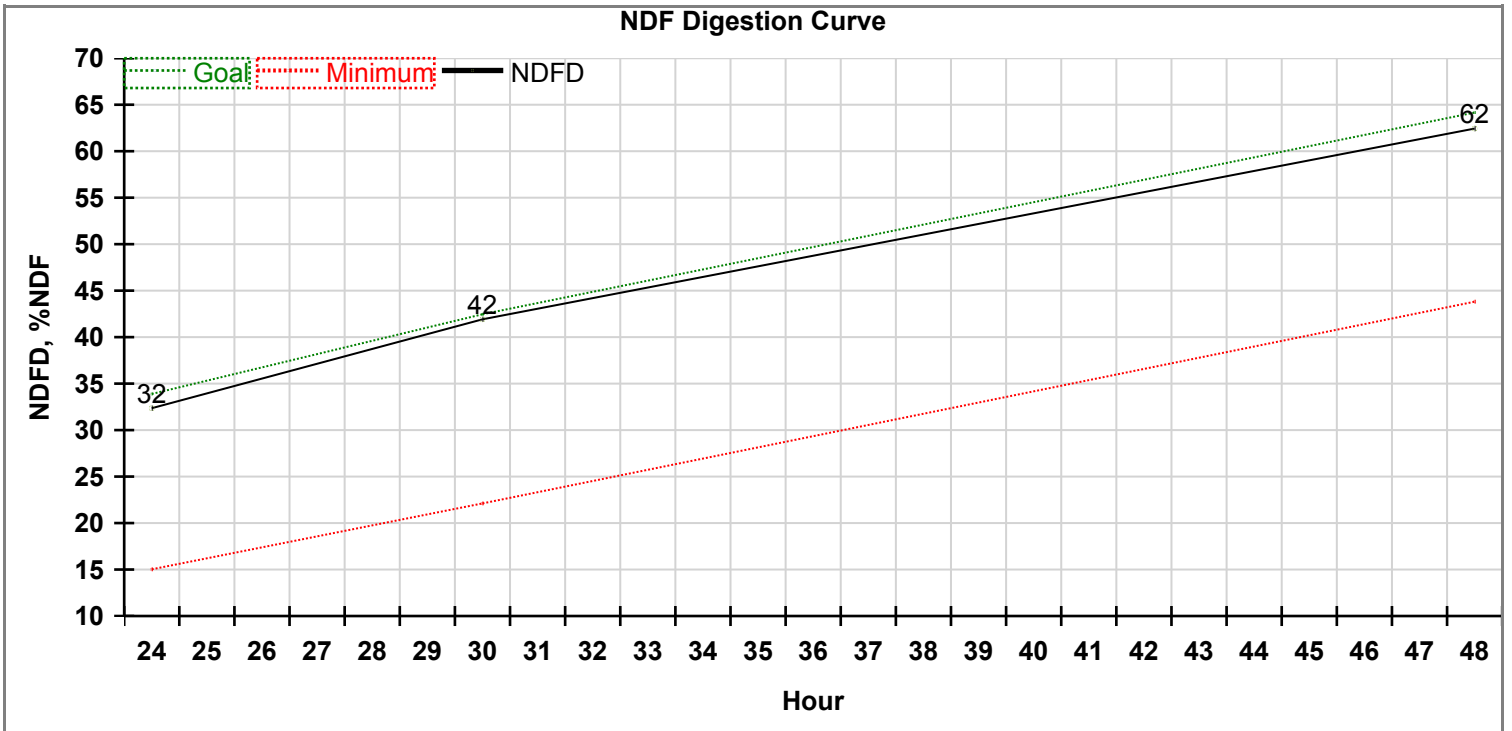
Southeast Agriseeds 5162
257 Pinson Rd NE
Rome, GA 30161
706.528.4806

2 Summer Feast 185.8

Dry Matter 16.30%
Moisture 83.70%

RFV	98	98.8
NFC	18.89	18.2
Milk 2006 Energy calculated using 30h Trad NDFD Dairy		
TDN 1X	61.09	51.2
NEL 3x, Mcal/lb	0.560	0.496
NEG, Mcal/lb	0.372	0.193
NEM, Mcal/lb	0.636	0.444
Milk/Ton, lb	2407	2020

For analysis guidelines, please visit <http://www.rockriverlab.com>



aNDF (w/NaSO₃) %DM = 57.3

The Goal corresponds to the 85th percentile and the Minimum corresponds to the 15th percentile.

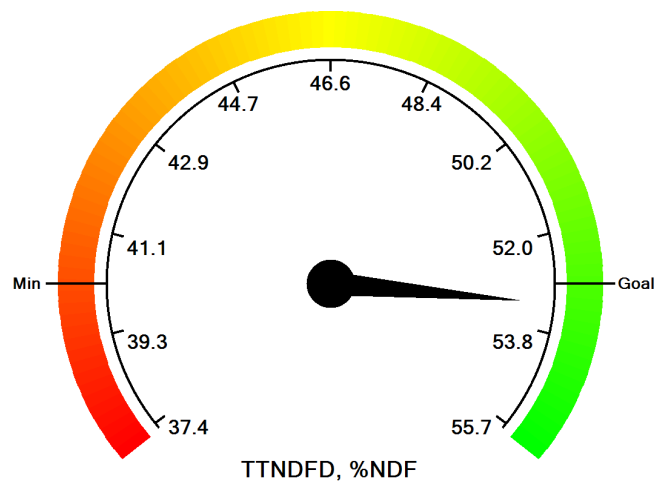
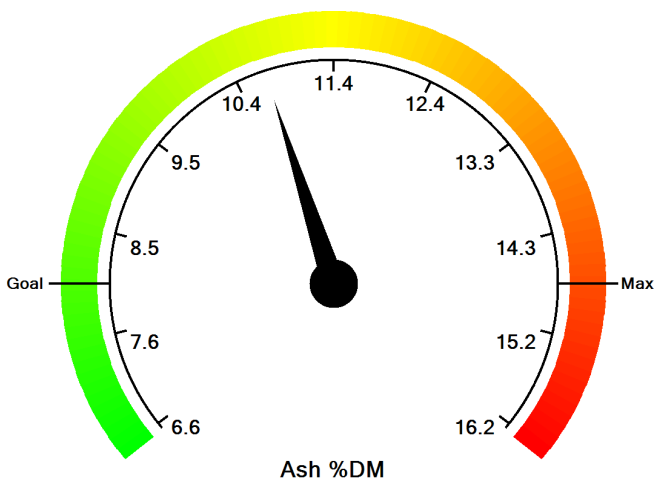
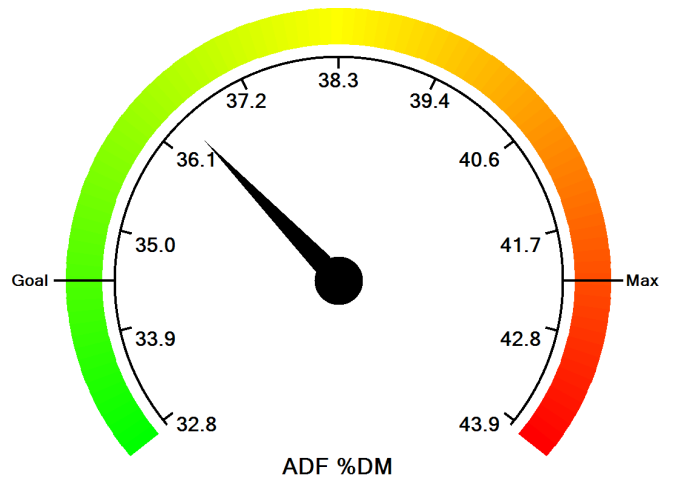
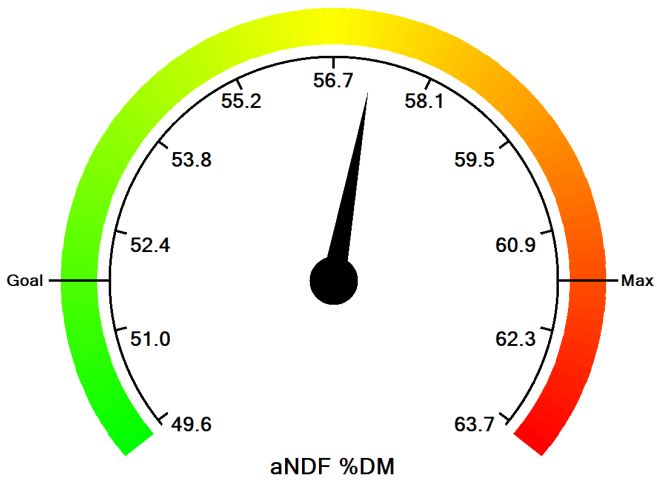
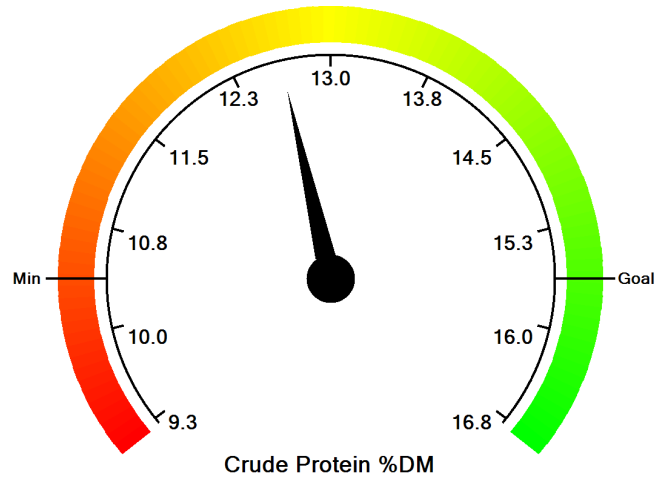
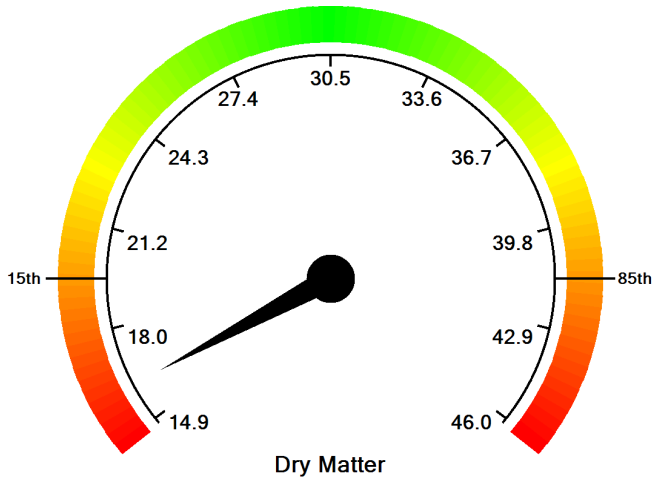
Visual Feed Analysis Report

Lab Number 3263637 7/8/2019

Sample ID Summer Feast 185.8

Farm

Consultant Josh Baker



The Goal corresponds to the 85th percentile and the Minimum corresponds to the 15th percentile.