

Feed Analysis Report

Representative:
Josh Baker

Southeast Agriseeds 5162
257 Pinson Rd NE
Rome, GA 30161
706.528.4806

1 Summer Breeze Crop 1

Dry Matter 26.48%
Moisture 73.52%

Description (%DM unless specified)	Dry Matter Basis	Sorghum/Sudan (Silage)	
		60 dy Avg	4 yr Avg
Dry Matter	26.48	31.3	30.5
Crude Protein	16.49	15.0	13.0
Soluble Protein, %CP	45.86	52.7	56.2
Avail. Crude Protein	15.70	14.2	12.2
ADICP	0.78	0.834	0.786
NDICP	2.78	2.35	1.90
ADICP %CP	4.75	5.75	6.35
ADF	37.15	37.9	38.3
aNDF	56.81	55.6	56.7
aNDFom	52.15	51.3	52.9
RUP %CP	23.66	23.7	25.0
Calcium	0.41	0.377	0.400
Phosphorus	0.39	0.375	0.317
Magnesium	0.23	0.283	0.270
Potassium	3.73	3.13	2.60
Sulfur	0.20	0.196	0.172
Fat (EE)	2.80	2.78	2.71
Ash	12.29	13.2	11.4
Lignin	4.02	4.30	4.86
Sugar (ESC)	1.55	2.34	3.13
Sugar (WSC)	6.01	5.19	4.65
Starch	0.27	1.14	3.56
Fermentation Products			
Lactic Acid	2.73	3.34	4.32
Acetic Acid	3.15	2.58	1.63
Butyric Acid	0.50	0.584	0.556
Ammonia-N CP Equivalent	0.90	0.913	1.24
Ammonia-N, %CP	5.43	6.18	9.80
pH	4.94	4.61	4.33
Fermentation DM Loss**	10.90	9.45	6.75
NDF Digest: Traditional=Goering & Van Soest Method, Standardized=Combs-Goeser Method			
NDFD 30, %NDF	57.85	49.0	51.6
NDFD 48, %NDF	74.52	69.4	66.9
Standardized NDFD 24, %NDF	29.72	24.4	24.5
Standardized NDFD 30, %NDF	39.00	33.2	32.3
Standardized NDFD 48, %NDF	61.00	55.7	54.0
NDFD 120, %NDF	75.83	72.7	70.1
NDFD 240, %NDF	78.97	75.3	74.9
uNDF30	23.94	28.4	27.5
uNDF240	11.95	13.9	14.4
tNDFD30om %aNDFom	60.12	51.5	54.4
tNDFD120om %aNDFom	78.14	75.3	72.7
tNDFD240om %aNDFom	81.28	77.9	77.4
uNDF120om	11.40		
uNDF240om	9.76		
uNDF30om	20.80		
Calculations			
TTNDFD, %NDF	52.13	47.9	46.6
TTNDFD Deviation, %NDF	5.58		
RFQ	126		
Dynamic NDF Kd (using 24,30,48,240 hr) %/hr	5.66	5.44	5.33

Bold results by wet chemistry

Lab # 3-264-620

Sampled 7/23/2019

Received 8/7/2019

Feed Analysis Report

Representative:
Josh Baker

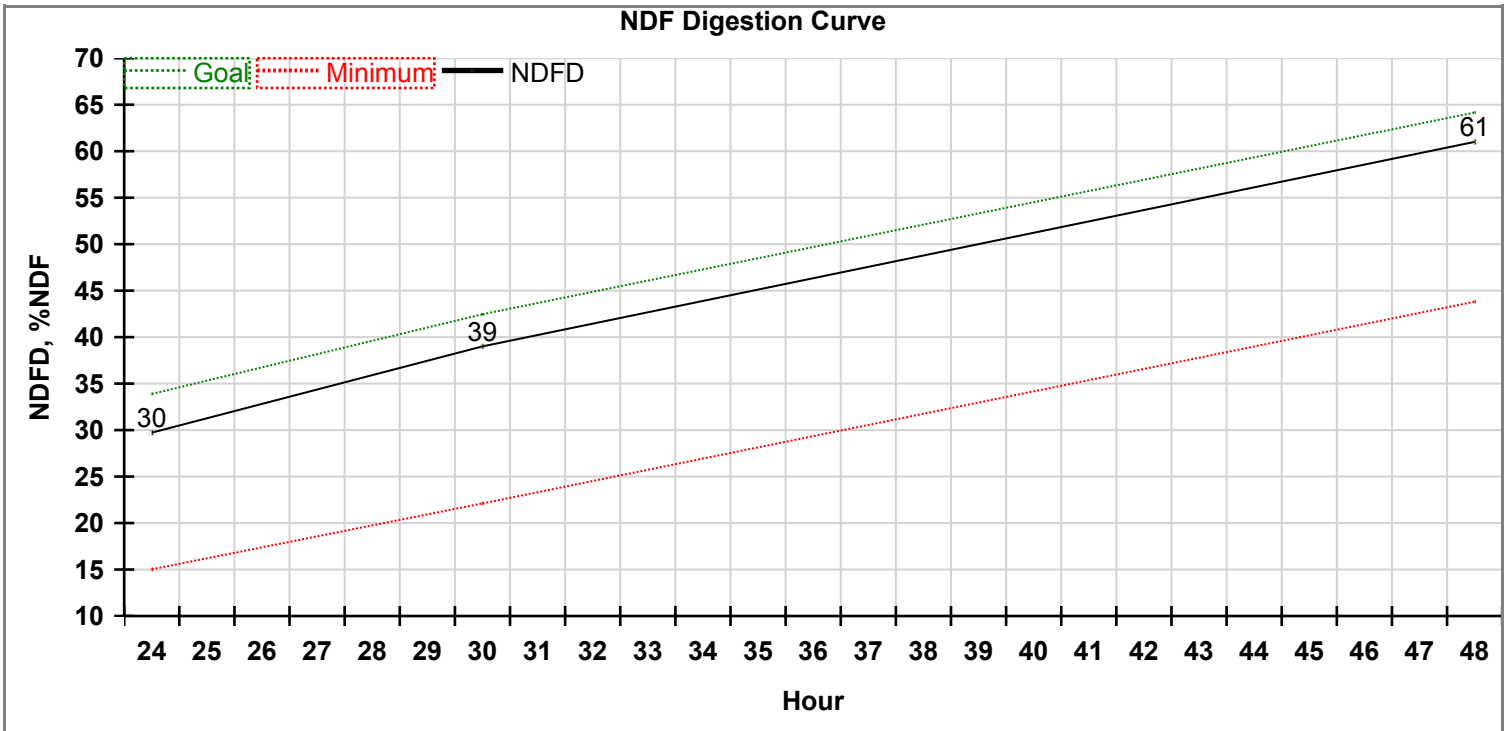
Southeast Agriseeds 5162
257 Pinson Rd NE
Rome, GA 30161
706.528.4806

1 Summer Breeze Crop 1

Dry Matter 26.48%
Moisture 73.52%

RFV	98	100	98.8
NFC	14.40	15.7	18.2
Milk 2006 Energy calculated using 30h Trad NDFD Dairy			
TDN 1X	61.65	50.2	51.2
NEL 3x, Mcal/lb	0.556	0.483	0.496
NEG, Mcal/lb	0.381	0.179	0.193
NEM, Mcal/lb	0.646	0.427	0.444
Milk/Ton, lb	2401	1916	2020

For analysis guidelines, please visit <http://www.rockriverlab.com>

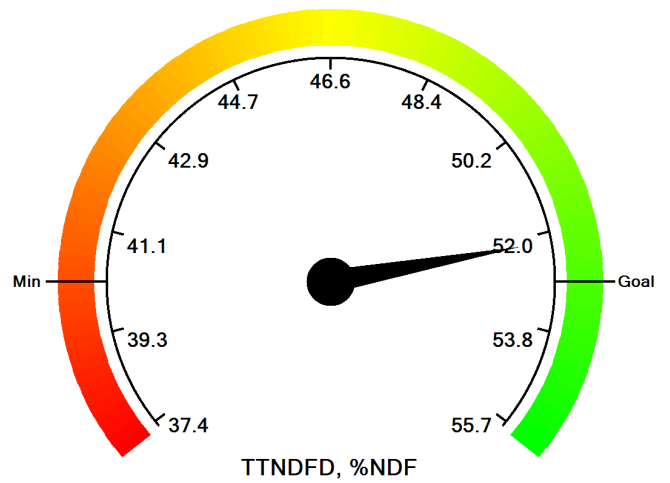
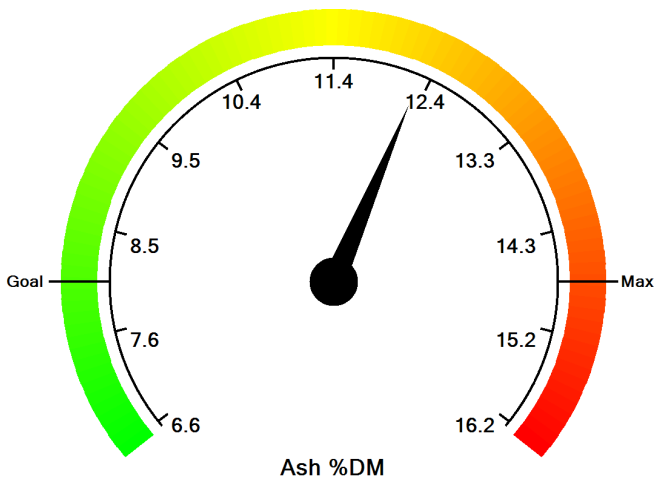
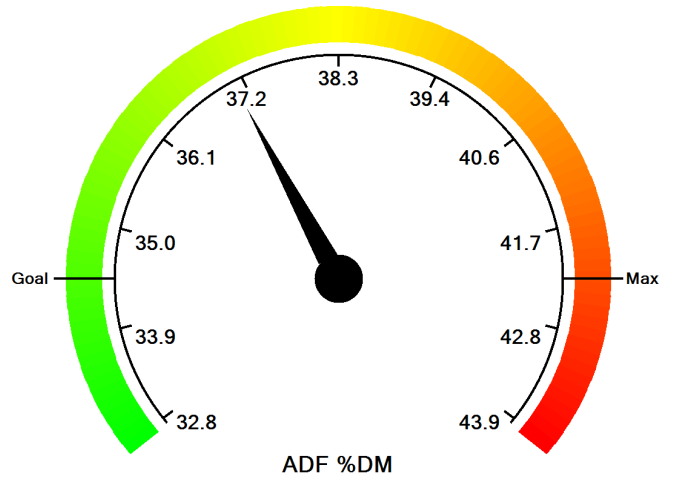
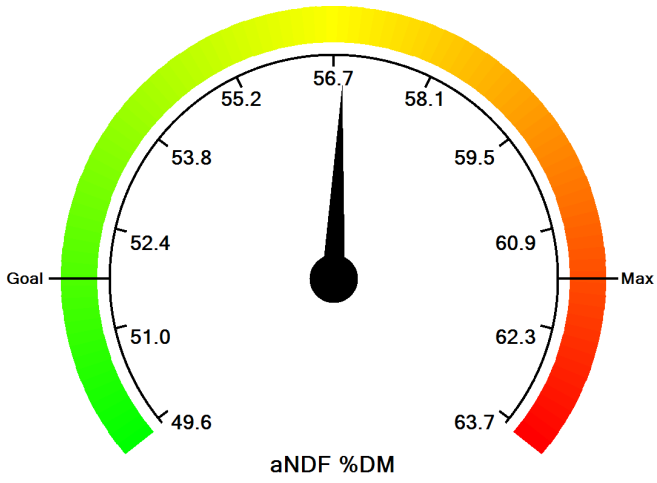
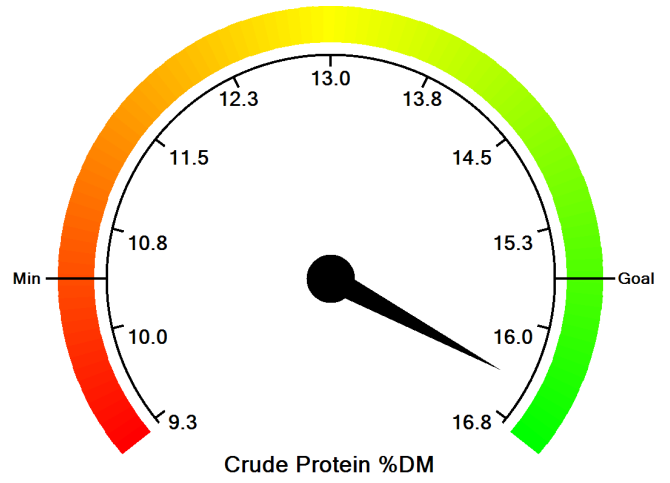
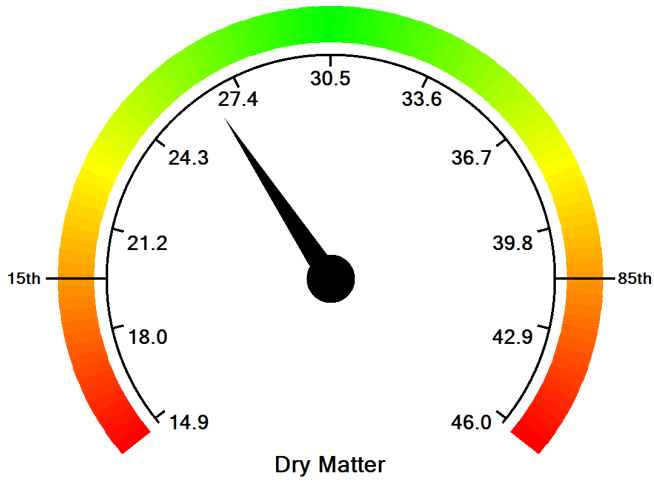


aNDF (w/NaSO₃) %DM = 56.8

The Goal corresponds to the 85th percentile and the Minimum corresponds to the 15th percentile.

Visual Feed Analysis Report

Lab Number 3264620 7/23/2019
Sample ID Summer Breeze
Farm [REDACTED]
Consultant Josh Baker



The Goal corresponds to the 85th percentile and the Minimum corresponds to the 15th percentile.